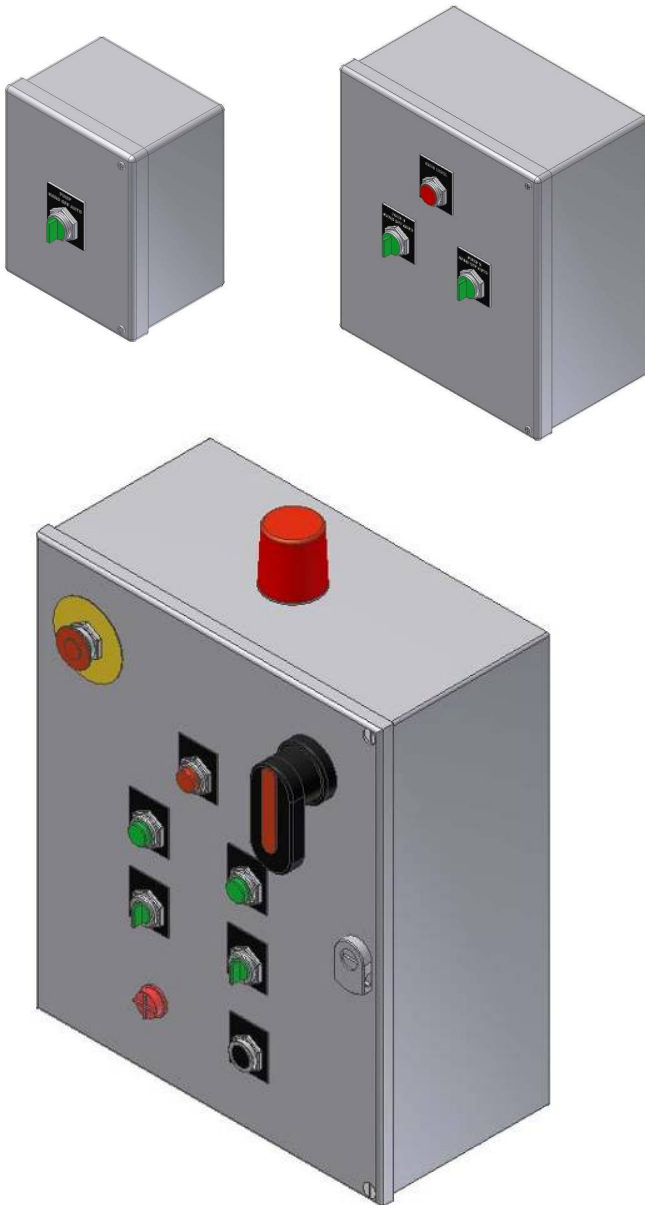


- LIFT PLUS -

Pump Lift Station Control Panels



Applications

- Standard control panels for pump applications
- Remote control panels for Pump Lift Stations
- Perfect for waste collection, transfer to waste treatment, rinse water and wash water applications
- Control for pumps in process liquids or waste streams
- Panels for collection & transfer requirements with a small footprint

Standard Features

- Single (Simplex) and Dual (Duplex) pump panels
- Single phase or three phase power
- NEMA 4/4X, hinged door, enclosures
- Relay control
- Alternating Lead/Lag control on duplex models
- All wires marked and color coded for simple maintenance
- HOA switches for auto or manual operation
- Indicator lights for pump "On" condition
- High level alarm light standard on all models except JBCP series

Available Options¹

- Leak detection alarm for double containment option
- Alarm horn with silencer
- Lockable disconnect switch
- Pump overload indicator (three phase only)

Operation²

- Simplex – *Single pump unit*
 - High level – pump on
 - Low level – pump off
- Duplex – *Double pump unit*
 - High level – second pump on
 - Low level – first pump on
 - Low-Low level – pumps off
 - Pumps alternate on low-low level

¹ Some options are standard on certain models, while other options are not available on all models.

² Standard control scheme is for emptying a tank/sump. If the application requires filling a tank/sump, please contact our sales team.

SIMPLE PUMP CONTROL PANELS – JBCP SERIES

SIMPLE SIMPLEX PUMP CONTROL PANELS, (1/3 HP TO 1HP)

STANDARD FEATURES:

1. 110 VAC, 1PH, 60HZ POWER CONNECTION, (SEE NOTE 1)
2. NEMA 4X ENCLOSURE, INCLUDING:
3. (1) ILLUMINATED PUMP HOA SWITCH
4. (1) POWER SUPPLY FOR LEVEL SWITCHES
5. (1) PUMP POWER RELAY, (MAX, RATING, 1HP @ 25 AMP)

SIMPLE SIMPLEX PUMP CONTROL PANELS			
MODEL NUMBER	MOTOR HP	BOX SIZE W" X H" X D"	PRICE
JBCP-SP-003	1/3	8 x 10 x 6	\$ 1,080
JBCP-SP-005	1/2	8 x 10 x 6	\$ 1,146
JBCP-SP-007	3/4	8 x 10 x 6	\$ 1,222
JBCP-SP-010	1	8 x 10 x 6	\$ 1,309

NOTE 1: MAXIMUM AMP. REQUIRED APX. 20 AMP FOR 1 HP MOTOR.



SIMPLE DUPLEX PUMP CONTROL PANELS, (1/3 HP TO 1HP)

STANDARD FEATURES:

1. 110 VAC, 1PH, 60HZ POWER CONNECTION, (SEE NOTE 2).
2. NEMA 4X ENCLOSURE, INCLUDING:
3. (2) ILLUMINATED PUMP HOA SWITCHES
4. (1) POWER SUPPLY FOR LEVEL SWITCHES
5. (2) PUMP POWER RELAYS, (MAX, RATING, 1HP @ 25 AMP)
6. (1) LEAD/LAG ALTERNATING CONTROL RELAY

SIMPLE DUPLEX PUMP CONTROL PANELS			
MODEL NUMBER	MOTOR HP	BOX SIZE W" X H" X D"	PRICE
EPCP-DP-003	1/3	12 x 14 x 6	\$ 1,550
EPCP-DP-005	1/2	12 x 14 x 6	\$ 1,645
EPCP-DP-007	3/4	12 x 14 x 6	\$ 1,754
EPCP-DP-010	1	12 x 14 x 6	\$ 1,877

NOTE 2: MAXIMUM AMP. REQUIRED APX. 20 AMP FOR EACH 1 HP MOTOR, (TOTAL 40 AMP).



ORDERING INFORMATION:

JBCP	-	<input type="text"/>	Required	P	-	<input type="text"/>
		S	003			
		D	005			
			007			
			010			

ECONOMY PUMP CONTROL PANELS – EPCP SERIES
ECONOMY SIMPLEX PUMP CONTROL PANELS, (1/3 HP TO 1HP)
STANDARD FEATURES:

1. 110 VAC OR 208/230 VAC, 1PH, 60HZ POWER CONNECTION
2. NEMA 4X ENCLOSURE, INCLUDING:
3. (1) ILLUMINATED PUMP HOA SWITCH
4. (1) HIGH LEVEL ALARM LIGHT - RED
5. (1) POWER SUPPLY FOR LEVEL SWITCHES
6. (1) PUMP POWER RELAY, (MAX. RATING, 1HP @ 25 AMP)

ECONOMY SIMPLEX PUMP CONTROL PANELS			
MODEL NUMBER	MOTOR HP	BOX SIZE W" X H" X D"	PRICE
EPCP-SP-003	1/3	16 x 18 x 8	\$ 1,217
EPCP-SP-005	1/2	16 x 18 x 8	\$ 1,292
EPCP-SP-007	3/4	16 x 18 x 8	\$ 1,378
EPCP-SP-010	1	16 x 18 x 8	\$ 1,475

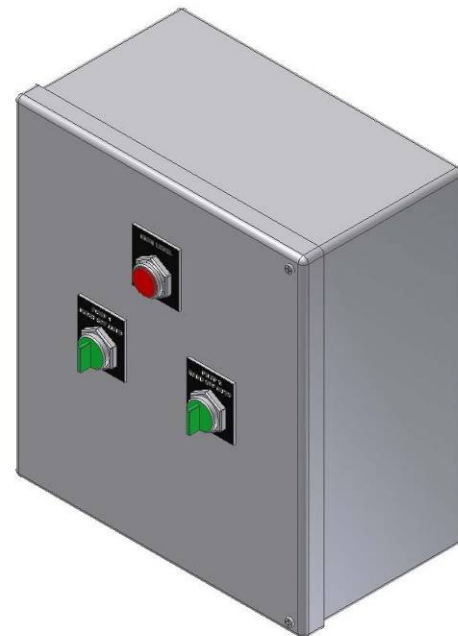
ECONOMY DUPLEX PUMP CONTROL PANELS, (1/3 HP TO 1HP)
STANDARD FEATURES:

1. 110 VAC OR 208/230 VAC, 1PH, 60HZ POWER CONNECTION
2. NEMA 4X ENCLOSURE, INCLUDING:
3. (2) ILLUMINATED PUMP HOA SWITCHES
4. (1) HIGH LEVEL ALARM LIGHT - RED
5. (1) POWER SUPPLY FOR LEVEL SWITCHES
6. (2) PUMP POWER RELAYS, (MAX. RATING, 1HP @ 25 AMP)
7. (1) LEAD/LAG ALTERNATING CONTROL RELAY

ECONOMY DUPLEX PUMP CONTROL PANELS			
MODEL NUMBER	MOTOR HP	BOX SIZE W" X H" X D"	PRICE
EPCP-DP-003	1/3	16 x 18 x 8	\$ 1,755
EPCP-DP-005	1/2	16 x 18 x 8	\$ 1,863
EPCP-DP-007	3/4	16 x 18 x 8	\$ 1,986
EPCP-DP-010	1	16 x 18 x 8	\$ 2,126

OPTIONS:

- LA – LEAK ALARM OPTION – ADD \$35
 - ADDS A RED ALARM PILOT LIGHT FOR LEAK ALARM
- AA – AUDIBLE ALARM OPTION – ADD \$80
 - ADDS AN ALARM BUZZER WITH SILENCE BUTTON
- DC – DISCONNECT OPTION – ADD \$150
 - ADDS A LOCKABLE DISCONNECT SWITCH
- *230 – 230VAC OPTION – ADD \$100
 - 208/230 VAC SINGLE PHASE LINE VOLTAGE


ORDERING INFORMATION:

		Required		Optional		
EPCP	-	<input type="checkbox"/> P	-	<input type="checkbox"/>	-	<input type="checkbox"/>
		S	003	110	LA	AA
		D	005	230*		DC
			007			
			010			

INDUSTRIAL PUMP CONTROL PANELS – IPCP SERIES
INDUSTRIAL SIMPLEX PUMP CONTROL PANELS, (1/2 HP TO 7.5HP)
STANDARD FEATURES:

1. 208/230 VAC OR 460VAC, 3PH, 60HZ POWER CONNECTION
2. NEMA 4 ENCLOSURE, INCLUDING:
3. (1) LOCKABLE DISCONNECT SWITCH
4. (1) EMERGENCY STOP BUTTON
5. (1) CONTROL TRANSFORMER
6. (1) PUMP HOA SWITCH
7. (1) PUMP "RUN" LIGHT - GREEN
8. (1) HIGH LEVEL ALARM LIGHT - RED
9. (1) POWER SUPPLY FOR LEVEL SWITCHES
10. (1) PUMP MOTOR STARTER WITH OVERLOAD PROTECTION

INDUSTRIAL SIMPLEX PUMP CONTROL PANELS			
MODEL NUMBER	MOTOR HP	BOX SIZE W" X H" X D"	PRICE
IPCP-SP-005	1/2	20 x 24 x 10	\$ 2,522
IPCP-SP-010	1	20 x 24 x 10	\$ 2,645
IPCP-SP-015	1.5	20 x 24 x 10	\$ 2,780
IPCP-SP-020	2	20 x 24 x 10	\$ 2,930
IPCP-SP-030	3	20 x 24 x 10	\$ 3,098
IPCP-SP-050	5	20 x 24 x 10	\$ 3,286
IPCP-SP-075	7.5	20 x 24 x 10	\$ 3,499

INDUSTRIAL DUPLEX PUMP CONTROL PANELS, (1/2 HP TO 7.5HP)
STANDARD FEATURES:

1. 208/230 VAC OR 460VAC, 3PH, 60HZ POWER CONNECTION
2. NEMA 4 ENCLOSURE, INCLUDING:
3. (1) LOCKABLE DISCONNECT SWITCH
4. (1) EMERGENCY STOP BUTTON
5. (1) CONTROL TRANSFORMER
6. (1) PUMP HOA SWITCH
7. (1) PUMP "RUN" LIGHT - GREEN
8. (1) HIGH LEVEL ALARM LIGHT - RED
9. (1) POWER SUPPLY FOR LEVEL SWITCHES
10. (1) PUMP MOTOR STARTER WITH OVERLOAD PROTECTION
11. (1) LEAD/LAG ALTERNATING CONTROL RELAY

INDUSTRIAL DUPLEX PUMP CONTROL PANELS			
MODEL NUMBER	MOTOR HP	BOX SIZE W" X H" X D"	PRICE
IPCP-DP-005	1/2	20 x 24 x 10	\$ 2,825
IPCP-DP-010	1	20 x 24 x 10	\$ 2,963
IPCP-DP-015	1.5	20 x 24 x 10	\$ 3,114
IPCP-DP-020	2	20 x 24 x 10	\$ 3,282
IPCP-DP-030	3	20 x 24 x 10	\$ 3,470
IPCP-DP-050	5	20 x 24 x 10	\$ 3,680
IPCP-DP-075	7.5	20 x 24 x 10	\$ 3,918

OPTIONS:

- LA – LEAK ALARM OPTION – ADD \$40
 - ADDS A RED ALARM PILOT LIGHT FOR LEAK ALARM
- AA – AUDIBLE ALARM OPTION – ADD \$120
 - ADDS AN ALARM STACK LIGHT AND BUZZER WITH SILENCE BUTTON
- OL – OVERLOAD OPTION – ADD \$40 PER PUMP
 - ADDS A PUMP "OVERLOAD" INDICATOR FOR EACH PUMP



Optional Equipment Shown

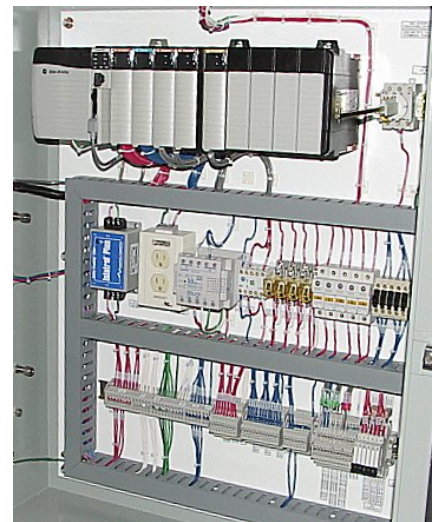
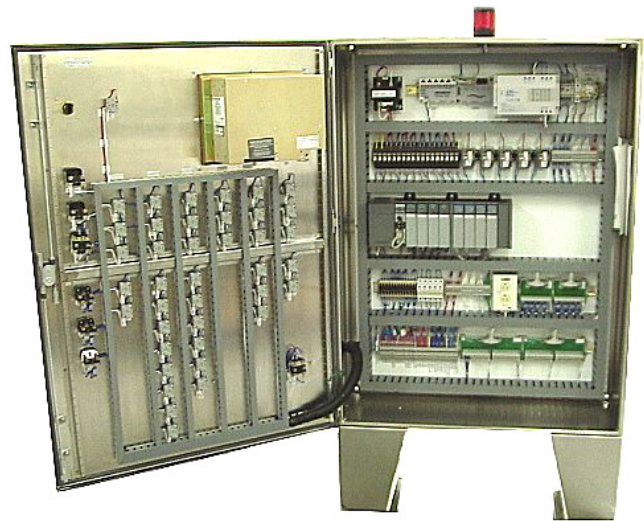
ORDERING INFORMATION:

		Required		Optional							
IPCP	-	<input type="checkbox"/>	P	-	<input type="checkbox"/>	-	<input type="checkbox"/>	-	<input type="checkbox"/>	-	<input type="checkbox"/>
	S		005		230		LA		AA		OL
	D		010		460						
			015								
			020								
			030								
			050								
			075								

Custom Control Panels

Available Features:

- Lead/Lag Pump Alternation
- NEMA 4X stainless steel enclosures
- Multiple lift stations controlled by a central panel
- PLC control with custom XENO™ software
- HMI touch screen with custom software
- UL label on all custom panels
- Leak detection monitoring
- Communication options:
 - Ethernet
 - SCADA interface
 - Remote PC monitoring
 - Alarm Conditions to beeper or cell phone
 - Wireless interface
 - Data Logging (21CFR11 compliant)



Wastech Controls & Engineering, Inc. is the industry leader in custom design, engineering, and manufacturing of a wide variety of industrial control, state-of-the-art turn-key systems, in the areas of chemical handling and process automation. Whether your project is large or small, we have the knowledge and capability to assist you with the most efficient, cost-effective, custom-designed system that best suits your operation.