

- MAG PLUS -

Magnetic Pump Lift Universal Station



Applications

- Automatically collect and transfer corrosive wastes and/or process chemicals
- Great option when gravity drain is not available for laboratory sinks or process machines
- Elevate and deliver wastes, chemicals, and fluids
- Pressurize open loop flows
- High collection & transfer requirement with small footprint

Standard Features

- Single (Simplex) and Dual (Duplex) pump configurations
- Polypropylene tank and cover
- 15, 33, & 60 gallon tanks with 1/2HP pump motors
- Centrifugal magnetic driven seal-less pump with TEFC pump motor
- Discharge check valve
- Pump isolation ball valves
- Pump control float level switches (reed switches)
- 1.5" vent connection
- 2" inlet and 3/4" outlet connections
- View port

Options

- Double containment tank
- High level alarm package with a local junction box (note1)
- High level & leak detection alarm package with a local junction box for double containment option (note1)
- Remote control panel (see back page)
- Alternating pumps (only with Duplex pump and remote control panel options together)

(Note1 – This option includes an audible horn with push button silencer, a remote alarm signal contact, an alarm light, and necessary sensor(s))

Operation

- Simplex – *Single pump unit*
 - High level – pump on
 - Low level – pump off
- Duplex – *Double pump unit*
 - High level – second pump on
 - Low level – first pump on
 - Low Low level – pumps off

Materials of Construction

- Tank (Polypropylene)
- Tank cover (Polypropylene)
- View port (clear PVC)
- Mounting bolts (316 SS)
- Level sensor (Polypropylene)
- Pump (CPVC)
- Pump suction and discharge pipes (CPVC)
- Pump motor (TEFC)
- Discharge check valve (CPVC w/EPDM trim)
- Pump isolation valves (CPVC)

Custom System Options (Please Contact Factory)

- Custom tank and pump sizes
- Tank level, influent/effluent flow, temperature, pressure, pH/ORP, and conductivity/resistivity monitoring and control
- Mixing and agitation
- Explosion proof lift stations
- Stainless steel tank
- PVDF systems
- PLC control & operator interface
- Industrial network communications
- UL control panels

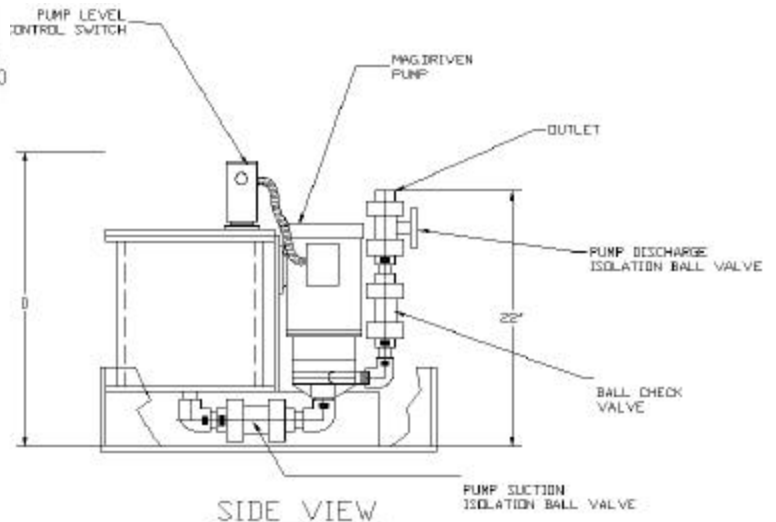
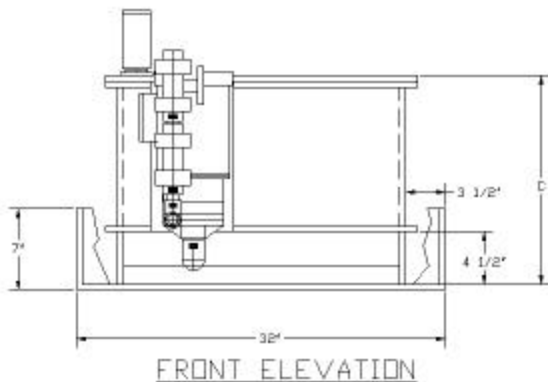
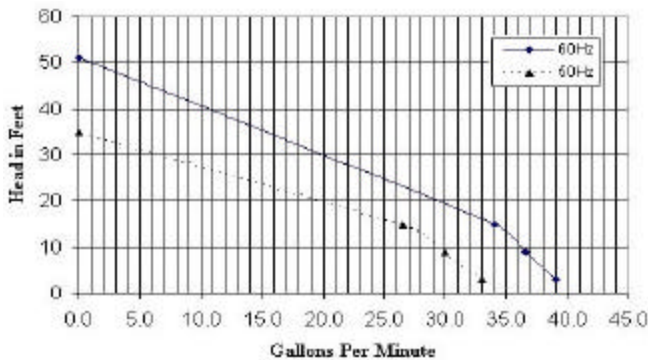
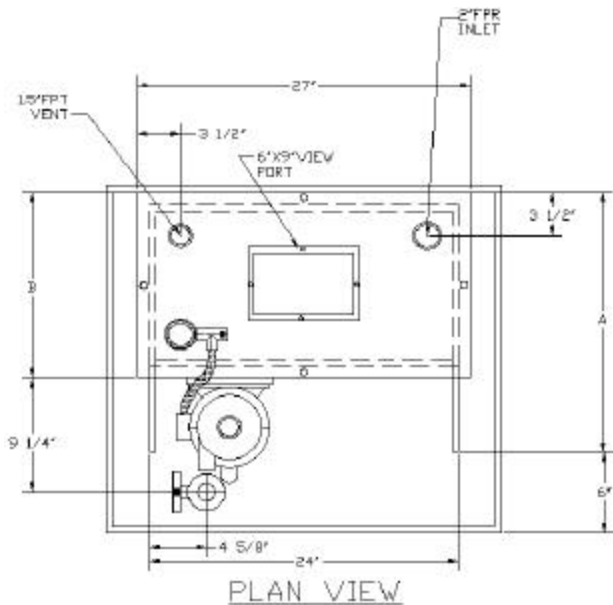
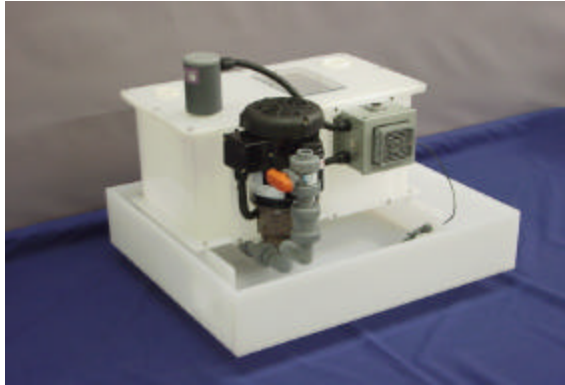
SIMPLEX (SINGLE PUMP) LIFT STATIONS

MODEL NUMBER	PRIMARY TANK CAPACITY (GAL.)	TANK SIZE LXWXD (INCH)	PUMP, HP (110VAC,1PH)	INLET FPT	OUTLET FPT	DIMENSIONS (INCH)				PRICE EACH
						A	B	C	D	
SMPLS-15	15	24X12X12	1/2	2	0.75	22	15	17	24	
SMPLS-33	33	24X18X18	1/2	2	0.75	28	21	23	30	
SMPLS-60	60	24X24X24	1/2	2	0.75	34	27	29	36	

SIMPLEX (SINGLE PUMP) LIFT STATIONS WITH CONTAINMENT TANK

MODEL NUMBER	PRIMARY TANK CAPACITY (GAL.)	TANK SIZE LXWXD (INCH)	PUMP, HP (110VAC,1PH)	INLET FPT	OUTLET FPT	DIMENSIONS (INCH)				PRICE W/OPTION
						A	B	C	D	
SMPLS-C-15	15	24X12X12	1/2	2	0.75	22	15	17	24	
SMPLS-C-33	33	24X18X18	1/2	2	0.75	28	21	23	30	
SMPLS-C-60	60	24X24X24	1/2	2	0.75	34	27	29	36	

High level alarm package option - \$300 (Add "-H" to part number)
 High level and leak detection alarm package option - \$350 (Add "-HL" to part number)



DUPLEX (DUAL PUMP) LIFT STATIONS

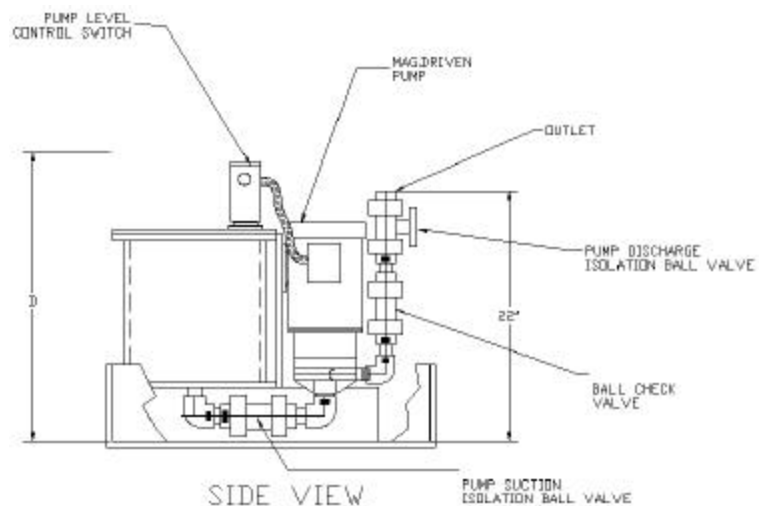
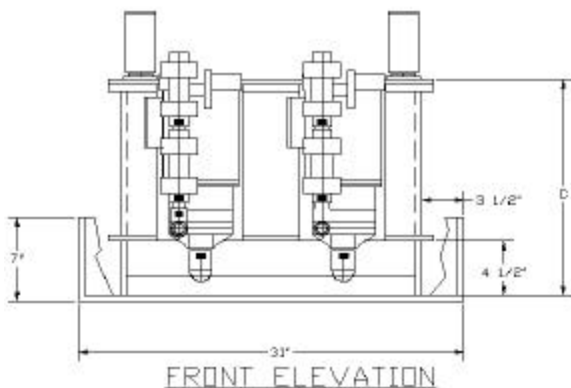
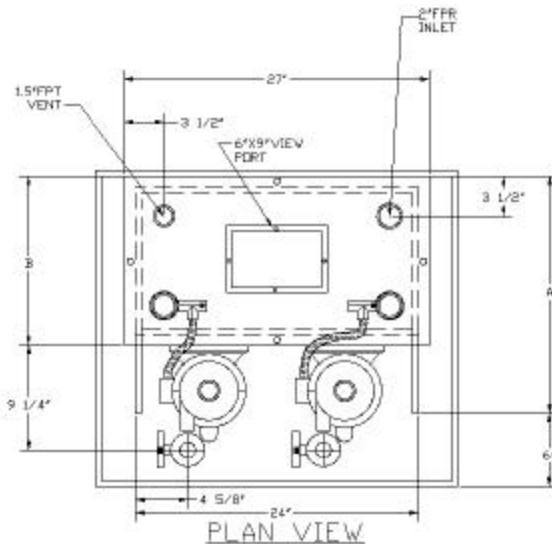
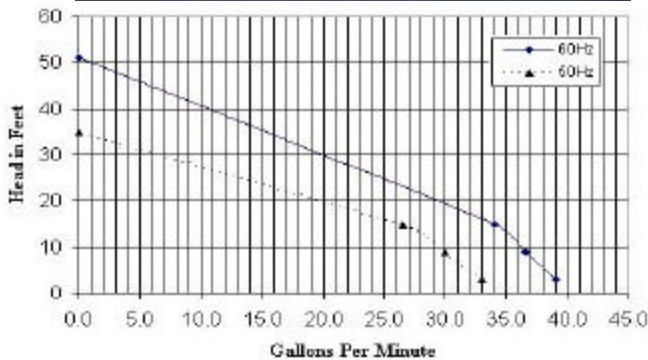
MODEL NUMBER	PRIMARY TANK CAPACITY (GAL.)	TANK SIZE LXWXD (INCH)	PUMP, HP (110VAC,1PH)	INLET FPT	OUTLET FPT	DIMENSIONS (INCH)				PRICE EACH
						A	B	C	D	
DMPLS-15	15	24X12X12	1/2	2	0.75	22	15	17	24	
DMPLS-33	33	24X18X18	1/2	2	0.75	28	21	23	30	
DMPLS-60	60	24X24X24	1/2	2	0.75	34	27	29	36	

DUPLEX (DUAL PUMP) LIFT STATIONS WITH CONTAINMENT TANK

MODEL NUMBER	PRIMARY TANK CAPACITY (GAL.)	TANK SIZE LXWXD (INCH)	PUMP, HP (110VAC,1PH)	INLET FPT	OUTLET FPT	DIMENSIONS (INCH)				PRICE W/OPTION
						A	B	C	D	
DMPLS-C-15	15	24X12X12	1/2	2	0.75	22	15	17	24	
DMPLS-C-33	33	24X18X18	1/2	2	0.75	28	21	23	30	
DMPLS-C-60	60	24X24X24	1/2	2	0.75	34	27	29	36	

High level alarm package option - \$300 (Add "-H" to part number)

High level and leak detection alarm package option - \$350 (Add "-HL" to part number)



Remote Control Panel

Standard Features

- Lead/Lag Pump Alternation (Duplex Only)
- NEMA 4/12 Enclosure
- Disconnect Switch
- Visual Alarm
- Alarm Dry Contact



	Option Suffix	Simplex	Duplex
Standard Remote Control Panel		SP11-0050	DP11-0050
Standard Price			
NEMA 4X (Option)	-4X		
E-Stop Button (Option)	-ES		
Audible Alarm w/Silence Button (Option)	-A		
Pump ON Pilot Light for each pump (Option)	-P		
Push to test Pilot Light (Option)	-T		
H-O-A Switch for each pump (Option)	-H		
Reset Alarm Button (Option)	-R		
Leak Detection Interface (Option)	-L		
UL Label (Option)	-U		

WASTECH firmly backs up all system design and equipment selections as the most effective way to provide our clients reliable and long-term performance capabilities. We guaranty performance and total satisfaction of the MAG-PLUS system.

Wastech Controls & Engineering, Inc. is the industry leader in custom design, engineering, and manufacturing of a wide variety of industrial control, state-of-the-art turn-key systems, in the areas of chemical handling and process automation. Whether your project is large or small, we have the knowledge and capability to assist you with the most efficient, cost-effective, custom-designed system that best suits your operation.

Wastech Controls & Engineering, Inc.
9305 ETON Ave.
Chatsworth, CA 91311
Phone: 818-998-3500
Fax: 818-998-4939